

HIGH SCAPE

BeitMisk 

DEVELOPED BY

EMAAR



WHEN IT COMES TO YOUR HOME. AIM HIGH.

THE HIGH-LIFE AWAITS, IN THESE SCENIC LOFTS IN BEITMISK MIXING MODERN URBANISM WITH NEW YORK COOL PERCHED IN AN AUTHENTIC AND SERENE LOCATION. ENJOY THE SUN BATHED DAYS AND DREAMY NIGHTS OVERLOOKING THE CITY LIGHTS IN A SPACE THAT REFLECTS YOUR STYLE.

HIGHSCAPE OFFERS DUPLEX LOFTS:

- STARTING 300 SQM
- 3 BEDROOMS
- PRIVATE ELEVATOR FOR EACH UNIT
- GUARANTEED UNOBSTRUCTED VIEW FOR LIFE
- FIBER OPTIC CONNECTION STRAIGHT TO HOME



BEITMISK GIVES YOU FLEXIBLE PAYMENT PLANS AND HANDLES ALL YOUR PAPERWORK.

What luxury at BeitMisk looks like:

- Prime location only 9 minutes away from Dora highway
- 24/7 water, gas and electricity
- 24/7 helpdesk and on-demand technicians
- 24/7 security
- 24/7 maintenance, cleaning and landscaping of common areas
- Country Club and Kids' Playground
- Fiber Optic Internet connected straight to your home



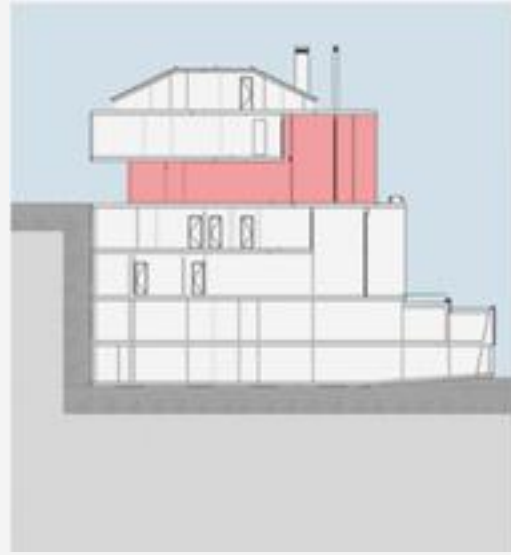
SET AT AN ALTITUDE OF 600 - 900 METERS, HIGHSCAPE LOFTS BENEFIT FROM AN UNOBSTRUCTED VIEW FOR LIFE OVERLOOKING BEIRUT AND THE MEDITERRANEAN SEA.



LOFT

Block A - D02

Ground Floor



BeitMisk 

4 BEDROOMS

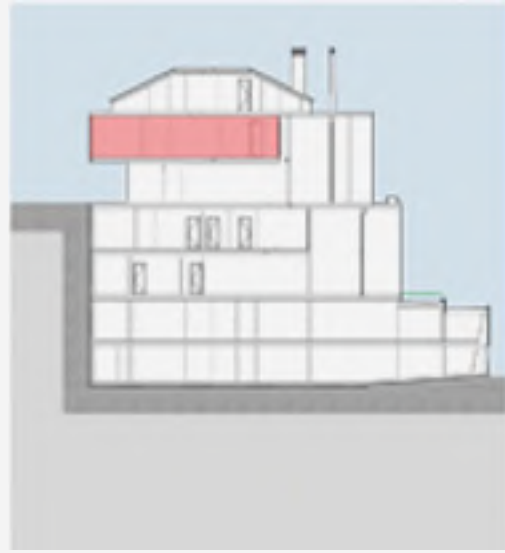
- Unit Area: 283 sqm
- Attic Area: 150 sqm
- Total Sellable Area: 333 sqm



LOFT

Block A - D02

Upper Floor



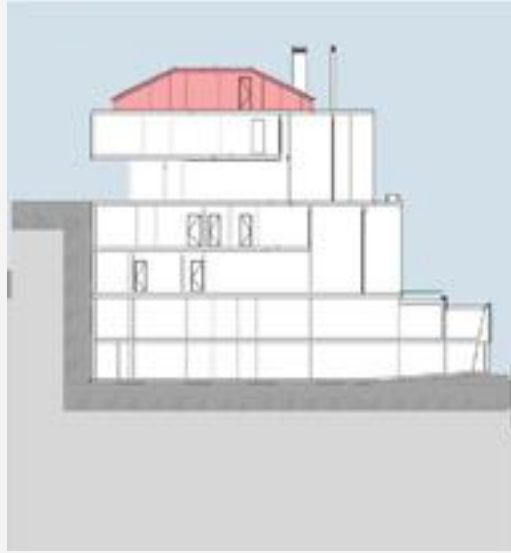
BeitMisk 

4 BEDROOMS

- Unit Area: 283 sqm
- Attic Area: 150 sqm
- Total Sellable Area: 333 sqm



LOFT
Block A - D02
Attic Floor



4 BEDROOMS

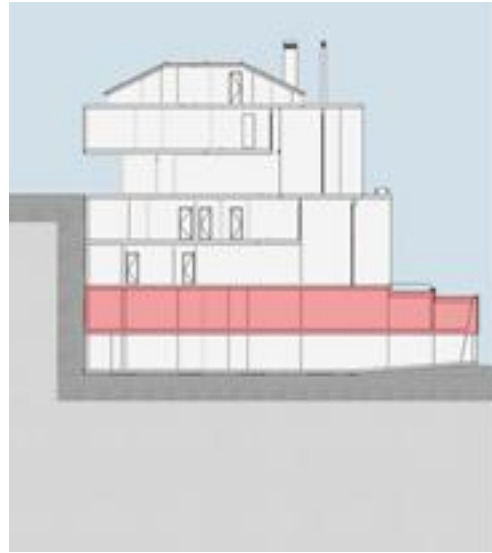
- Unit Area: 283 sqm
- Attic Area: 150 sqm
- Total Sellable Area: 333 sqm



LOFT

Block A - G01

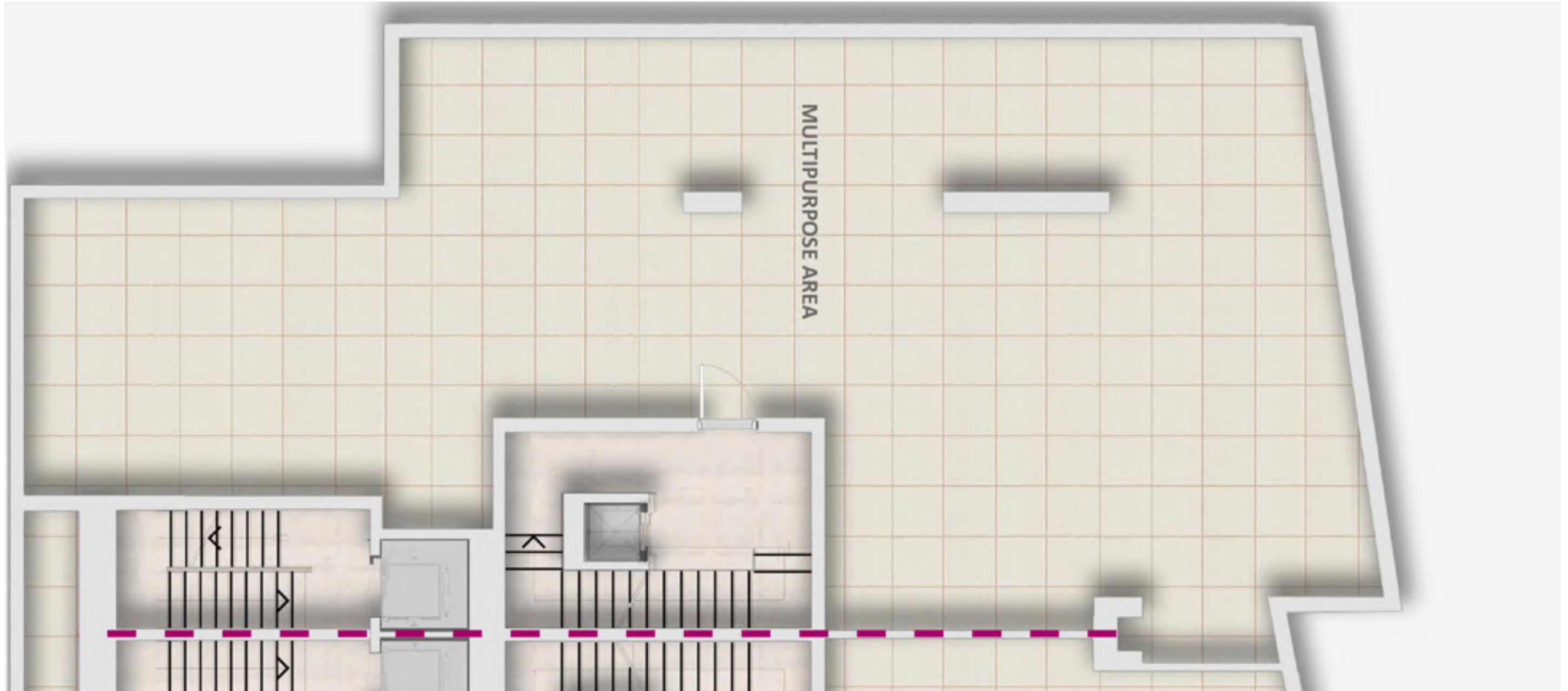
Basement Floor -
Multipurpose



BeitMisk 

3 BEDROOMS

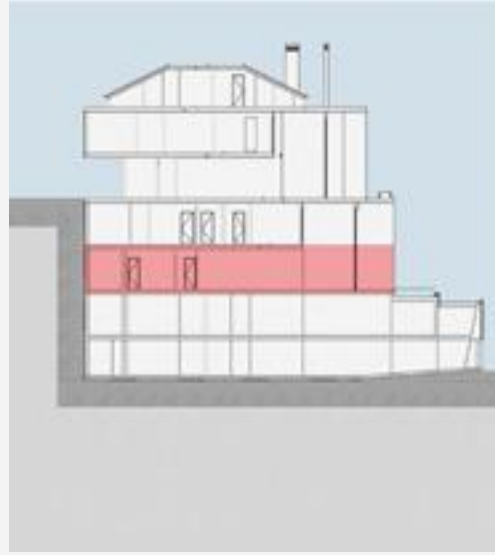
- Unit Area: 309 sqm
- Garden Area: 108 sqm
- Multipurpose Area: 220 sqm
- Total Sellable Area: 418 sqm



LOFT

Block A - G01

Garden Floor



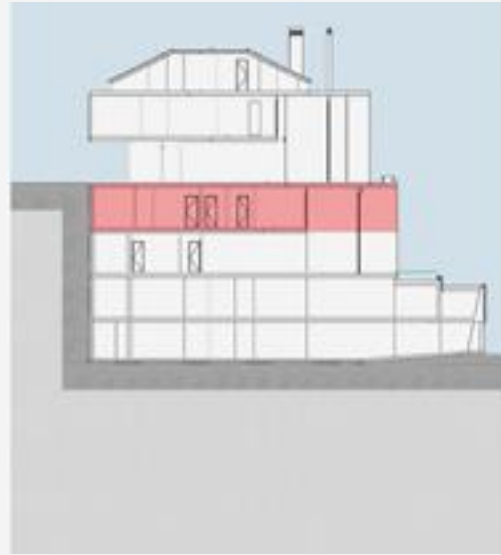
BeitMisk 

3 BEDROOMS

- Unit Area: 309 sqm
- Garden Area: 108 sqm
- Multipurpose Area: 220 sqm
- Total Sellable Area: 418 sqm



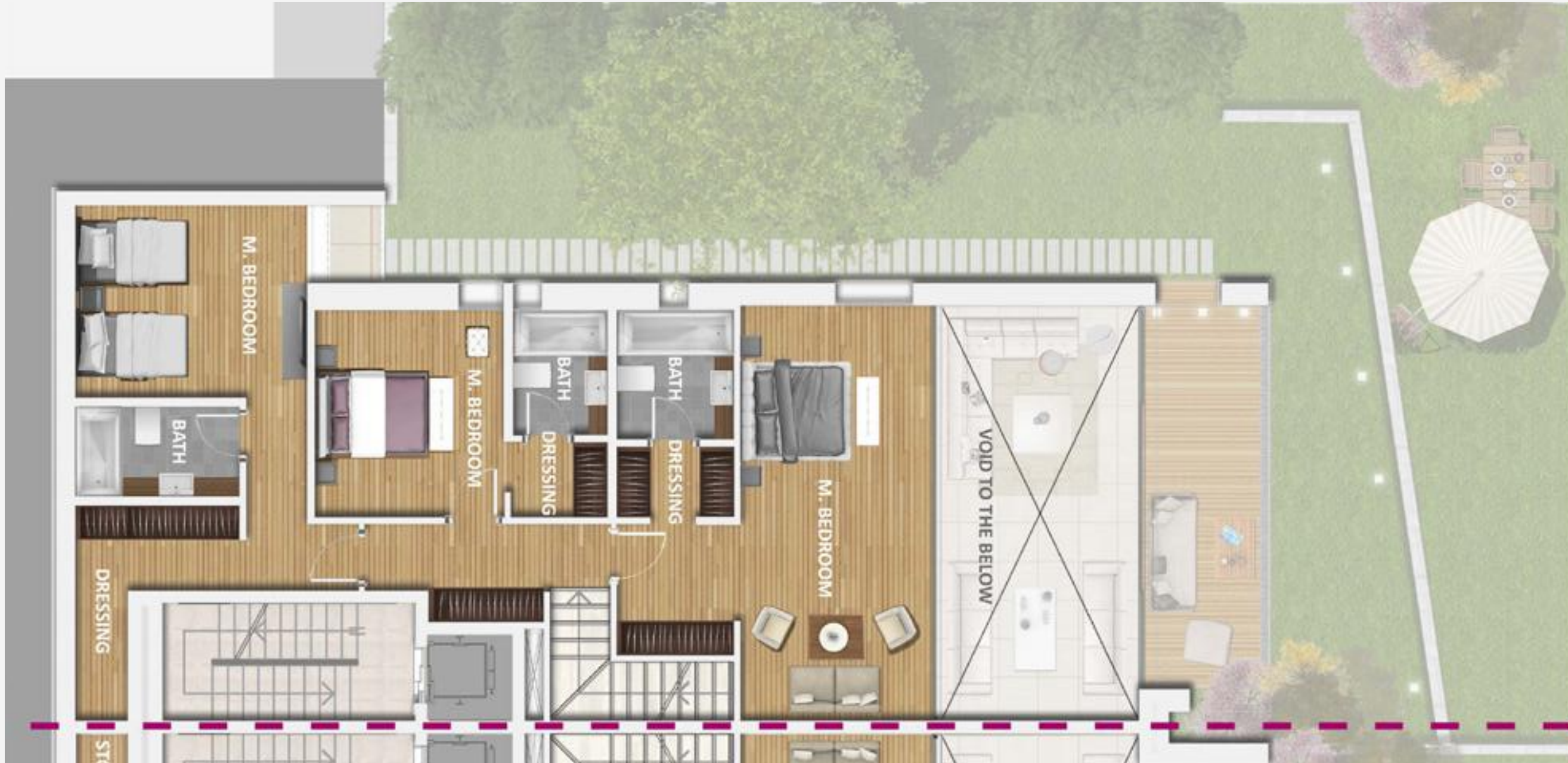
LOFT
Block A - G01
Upper Floor



BeitMisk 

3 BEDROOMS

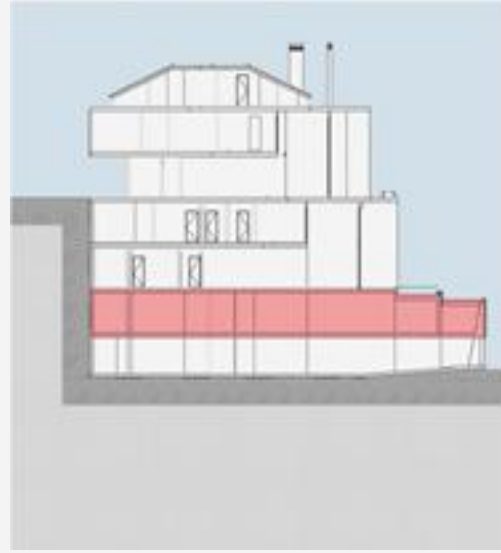
- Unit Area: 309 sqm
- Garden Area: 108 sqm
- Multipurpose Area: 220 sqm
- Total Sellable Area: 418 sqm



LOFT

Block A - G02

Basement Floor -
Multipurpose



BeitMisk 

3 BEDROOMS

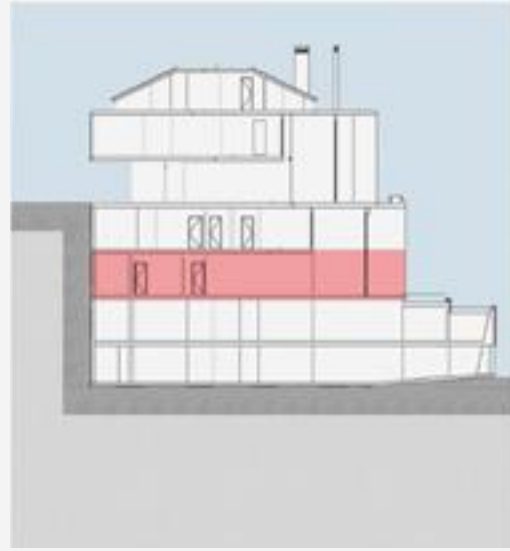
- Unit Area: 325 sqm
- Garden Area: 249 sqm
- Multipurpose Area: 240 sqm
- Total Sellable Area: 433 sqm



LOFT

Block A - G02

Garden Floor



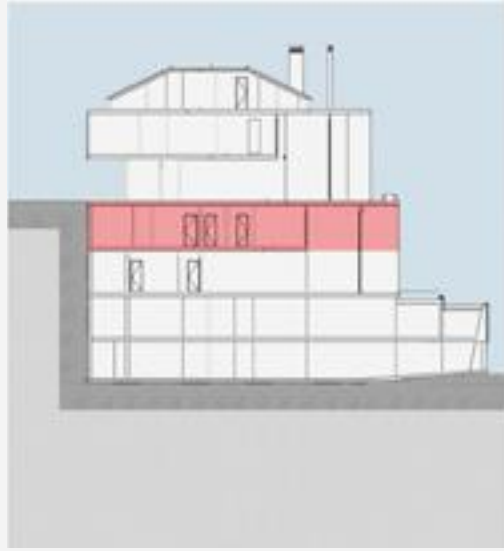
BeitMisk 

3 BEDROOMS

- Unit Area: 325 sqm
- Garden Area: 249 sqm
- Multipurpose Area: 240 sqm
- Total Sellable Area: 433 sqm



LOFT
Block A - G02
Upper Floor



BeitMisk 

3 BEDROOMS

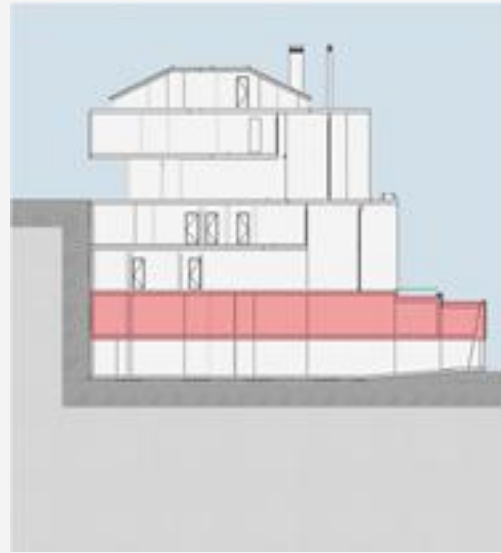
- Unit Area: 325 sqm
- Garden Area: 249 sqm
- Multipurpose Area: 240 sqm
- Total Sellable Area: 433 sqm



LOFT

Block B - G03

Basement Floor -
Multipurpose



BeitMisk 

3 BEDROOMS

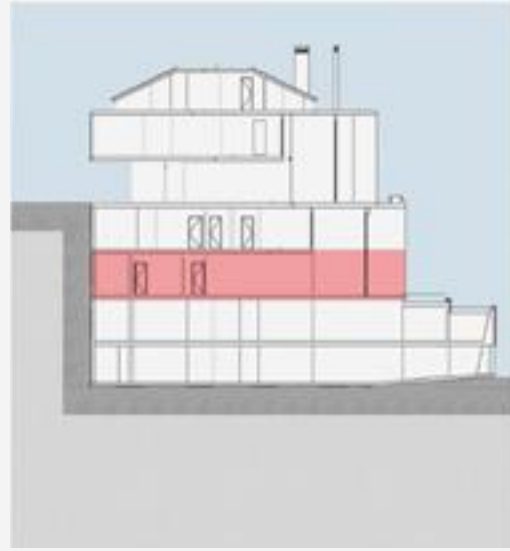
- Unit Area: 326 sqm
- Garden Area: 249 sqm
- Multipurpose Area: 235 sqm
- Total Sellable Area: 432 sqm



LOFT

Block B - G03

Garden Floor



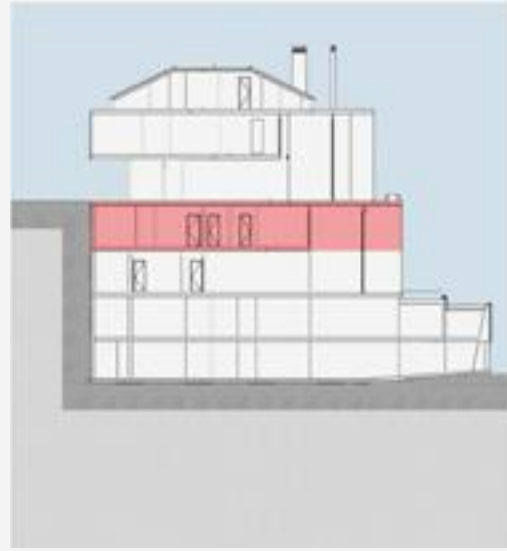
BeitMisk 

3 BEDROOMS

- Unit Area: 326 sqm
- Garden Area: 249 sqm
- Multipurpose Area: 235 sqm
- Total Sellable Area: 432 sqm



LOFT
Block B - G03
Upper Floor

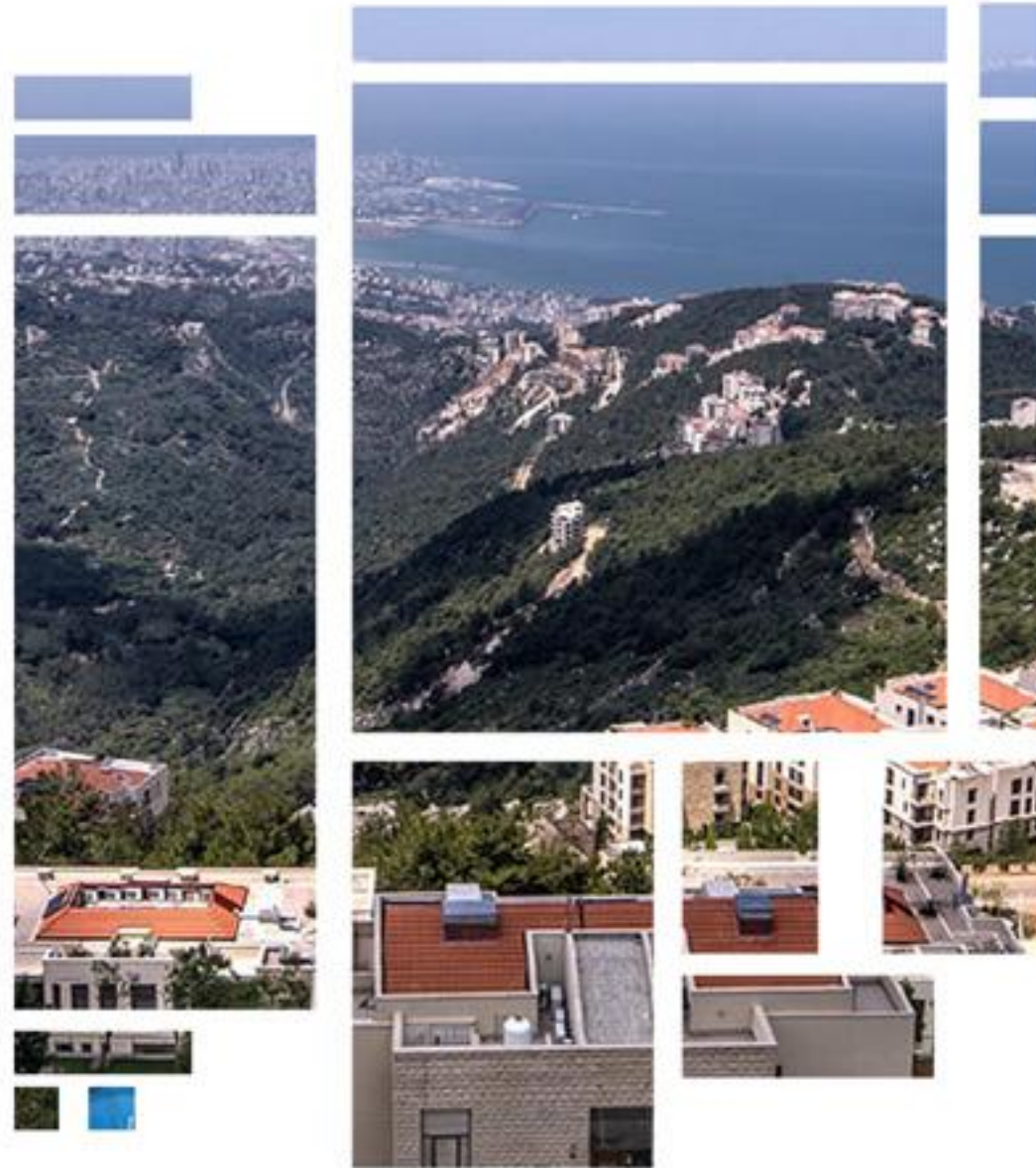


BeitMisk 

3 BEDROOMS

- Unit Area: 326 sqm
- Garden Area: 249 sqm
- Multipurpose Area: 235 sqm
- Total Sellable Area: 432 sqm





ESCAPE TO THE HIGH LIFE.

Call our representatives on +961 1 21 21 21 or +961 3 52 77 77

Or email them on info@beitmisk.com

