

KEENAPARK

BeitMisk



An aerial photograph of a coastal city, likely Rio de Janeiro, showing a dense urban area with many high-rise buildings. The city is situated on a peninsula and is surrounded by a large body of water (the bay). In the foreground, there are lush green mountains with some buildings scattered across the slopes. The sky is clear and blue. The text 'KEENAPARK' is overlaid on the right side of the image.

KEENAPARK

TO MANY, TRUE LUXURY IS
LEADING AN EXCLUSIVE LIFESTYLE
IN A POLLUTION-FREE ENVIRONMENT,
SURROUNDED BY GREENERY
AND A VIEW TO DIE FOR.



KEENA PARK

**TO US, IT'S EXACTLY THE SAME,
BUT IN A CONVENIENTLY STUNNING
120 SQM APARTMENT.**

At Keena Park, you will live the life you've always wanted in a luxurious 2 or 3 bedroom apartment or loft with an unobstructed view over Beirut and the Mediterranean Sea.

**WE ADVISE ON THE BEST PAYMENT
PLAN FOR YOU AND TAKE CARE OF
ALL YOUR PAPERWORK.**

KEENAPARK

BeitMisk



KEENAPARK

BeitMisk



KEENAPARK

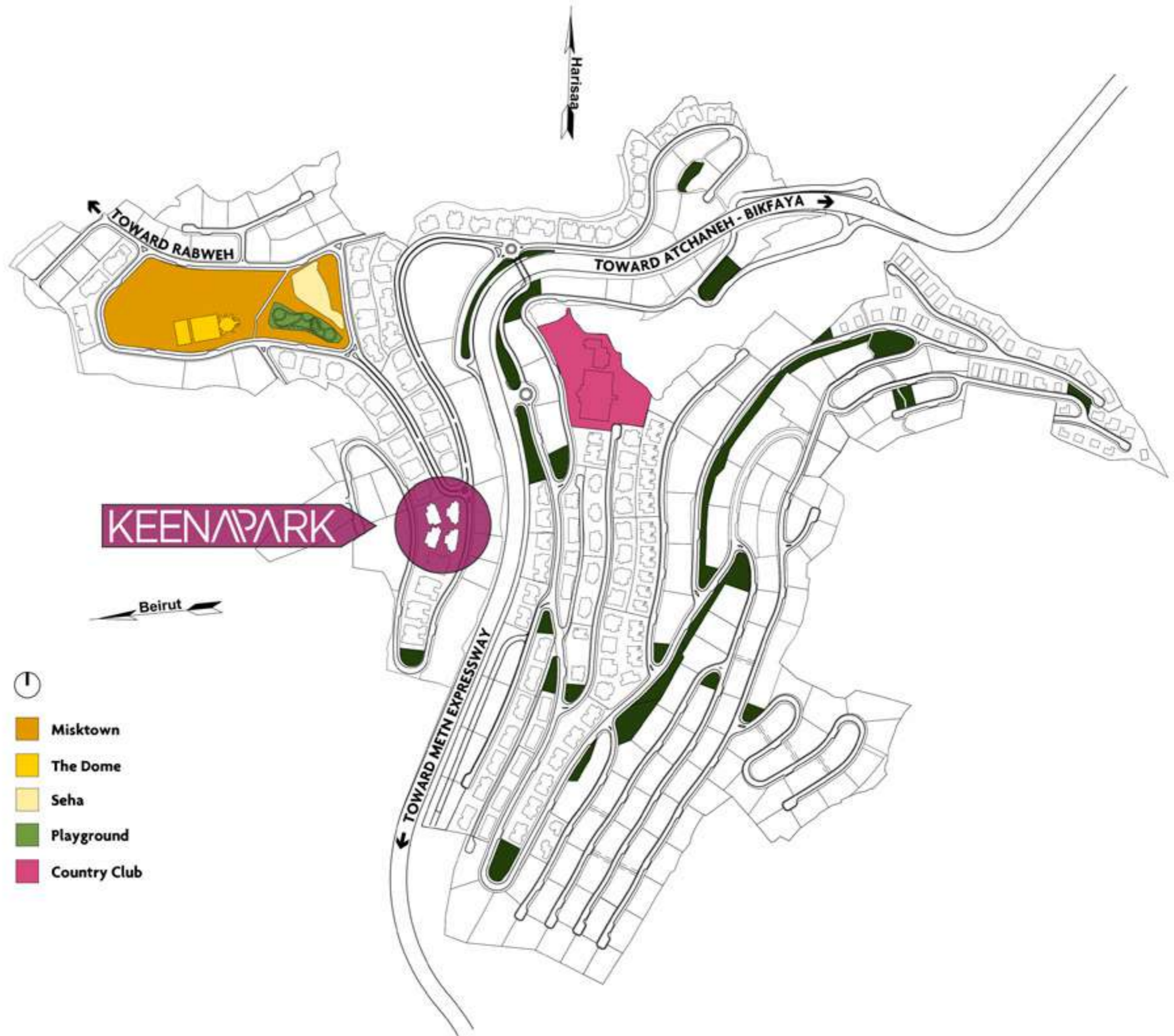
BeitMisk




KEENAPARK

BeitMisk





-  Misktown
-  The Dome
-  Seha
-  Playground
-  Country Club

LANDSCAPE

Keena Park is comprised of 4 buildings connected by a private garden, a lovely space for you and your family to enjoy on a sunny day in total serenity.

Residences at Keena Park range from 120 sqm to 220 sqm. This beautiful collection of 2 to 3 bedroom apartments are designed with the highest specifications.

Breathtaking views and flawlessly crafted interiors are combined to create a luxurious living experience in the heart of Beitmisk.



KEENAPARK

BeitMisk



KEENAPARK

BeitMisk



KEENA PARK



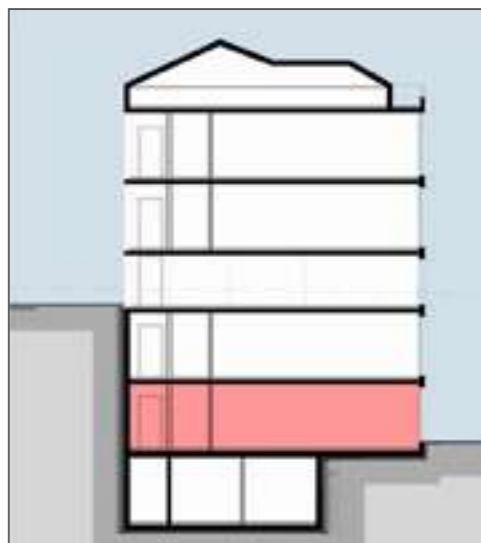
KEENA 2 G01

2 BEDROOMS

Apartment area: 144 sqm

Garden area: 205 sqm

Total Sellable area: 212 sqm



KEENA PARK



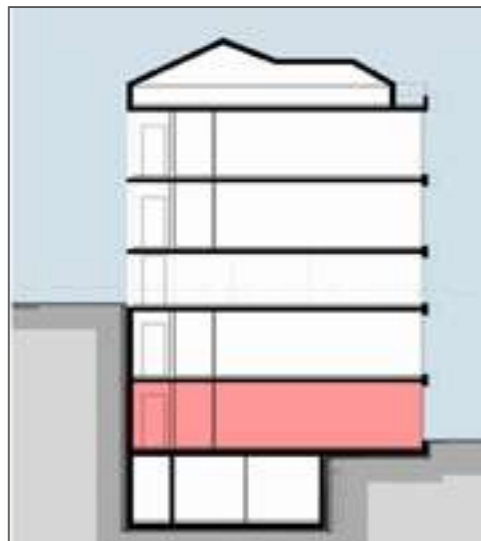
KEENA 2 G02

2 BEDROOMS

Apartment area: 120 sqm

Garden area: 67 sqm

Total Sellable area: 142 sqm



KEENA PARK



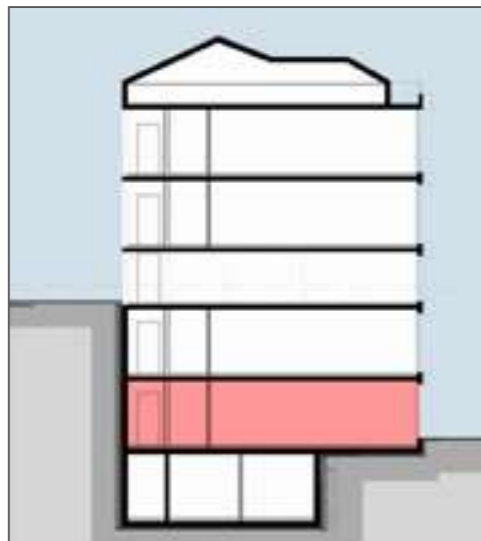
KEENA 2 G03

2 BEDROOMS

Apartment area: 136 sqm

Garden area: 168 sqm

Total Sellable area: 192 sqm



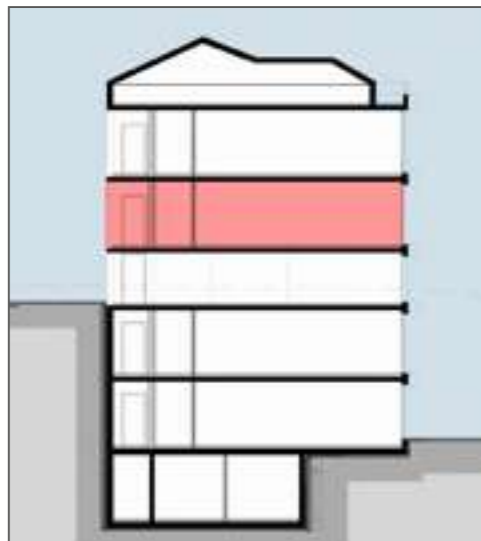
KEENA PARK



KEENA 2 G21

2 BEDROOMS

Apartment area: 144 sqm



KEENA PARK

KEENA 2 101

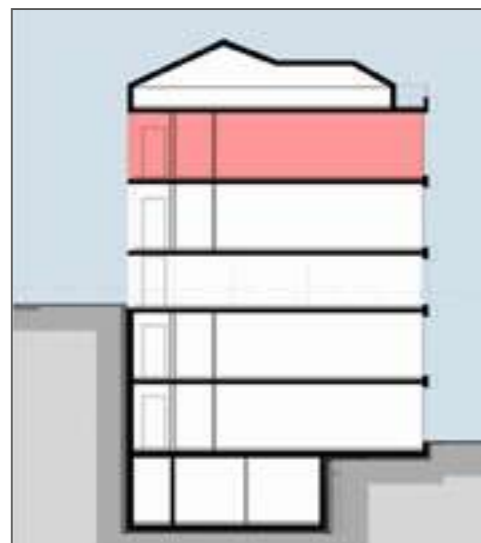
3 BEDROOMS DUPLEX

Apartment area: 186 sqm

Attic area: 169 sqm

Terrace area: 212 sqm

Total Sellable area: 312 sqm



KEENA PARK

KEENA 2 101

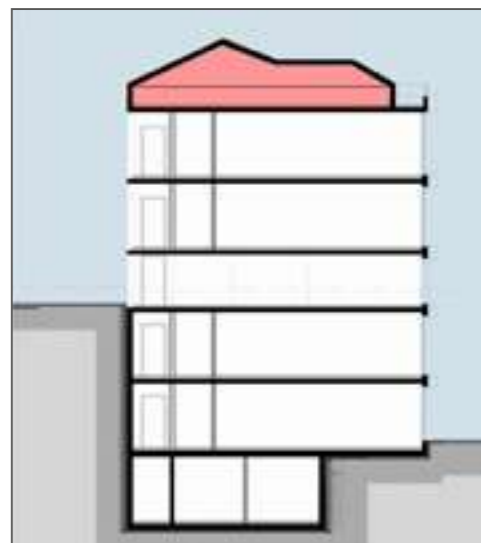
3 BEDROOMS DUPLEX

Apartment area: 186 sqm

Attic area: 169 sqm

Terrace area: 312 sqm

Total Sellable area: 312 sqm



KEENAPARK

BeitMisk



KEENAPARK

BeitMisk



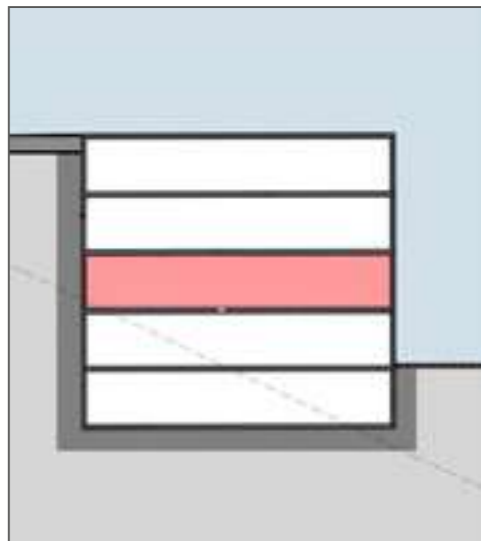
KEENA PARK



KEENA 7 102

3 BEDROOMS

Apartment area: 199 sqm




ABOUT BEITMISK

Located off the Metn expressway, BeitMisk is only 15 minutes away from Beirut Central District and less than 10 minutes from the best schools, malls and hospitals, promising an ideal life within reach of everything, all year long.

Once you move in, our facility management offers you 24/7 support covering a wide range of maintenance, security, landscaping, garbage collection and technology related services.





**EVERYTHING IS DESIGNED TO
INCREASE THE COMFORT AND
HAPPINESS OF OUR RESIDENS.**

With our state of the art country club,
beautifully landscaped outdoor areas,
and kids' playground, you and your family
will benefit from a healthy lifestyle and
peace of mind.



A COMMUNITY WORTH LIVING IN

At Beitmisk, the comfort of every resident is a round-the-clock priority.

PROXIMITY

Only 10 mins away from Dora Highway & the best schools and hospitals.

CERTIFIED POLLUTION-FREE ENVIRONMENT

LOWEST MAINTENANCE FEES COUNTRY-WIDE

24/7 WATER, GAZ & ELECTRICITY SUPPLY

24/7 SECURITY

24/7 HELPDESK AND ON-DEMAND TECHNICIANS

WASTE MANAGEMENT

FIBER OPTIC CONNECTIVITY

KIDS PLAYGROUND & COUNTRY CLUB

CALL US

+961 1 21 21 21

+961 3 52 77 77 (Call or WhatsApp)

EMAIL US

info@beitmisk.com

VISIT US

BeitMisk, Metn Expressway
Aatchaneh, Mount Lebanon

BeitMisk

